

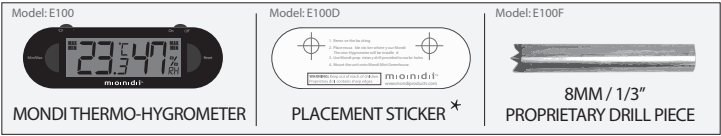


Mondi Mini Greenhouse

THERMO-HYGROMETER

Important Product Information Guide

THIS KIT CONTAINS THE FOLOWING ITEMS:



* Placement sticker template also available at www.mondiproducts.com

1. INTRODUCTION

Congratulations on your purchase of the Mondi Mini Greenhouse Thermo-Hygrometer, the most revolutionary product in the horticultural industry today! Mondi Products Inc. is bringing propagation to a whole new level with the Mini Greenhouse Thermo-Hygrometer. Its revolutionary technology gives you the precise, real-time information that is essential during propagation, meaning it's never been easier and more enjoyable to propagate a wide variety of plants. Included in this kit is everything you need to start enjoying the numerous benefits the Mondi Mini Greenhouse Thermo-Hygrometer has to offer. Besides its many uses in the horticultural industry, the Mondi Mini Greenhouse Thermo-Hygrometer has a wide range of applications, such as the food industry, health and safety and pet care.

2. IMPORTANT PRODUCT INFORMATION

Always read the instruction manual and warranty card before using this product. This product has been manufactured with premium grade Japanese components and technology to ensure it is of the highest quality. It is RoHS compliant and made with food-grade plastics.

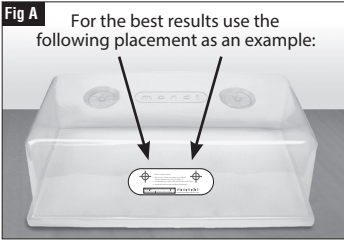
Disclaimer: This device may not be 100% accurate and has been manufactured to be accurate within +/- one degree. Mondi Products Inc. is not liable for any losses that may occur while using this product. This product contains small removable parts that are a choking hazard. Keep away from small children.

3. PRECAUTIONS

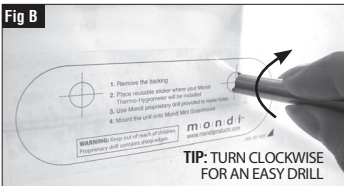
- Keep away from water. This device is intended for indoor use only. It is not sealed for moisture and could be damaged if used outdoors.
- Do not clean this product with abrasive or corrosive materials. This may scratch plastic parts and/or corrode electronic circuits.
- Do not subject this product to excessive force or shock. This may result in malfunction, shorter electronic life span, a damaged battery or distorted parts.
- Do not tamper with any internal components. Doing so will void the warranty and may cause damage. This product contains no user serviceable parts.

4. MOUNTING THE THERMO-HYGROMETER

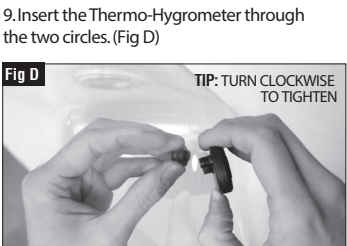
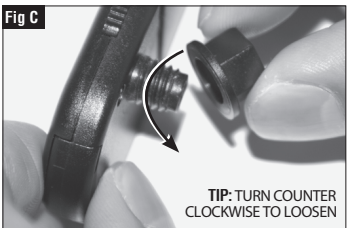
1. Locate a position on the Mondi Mini Greenhouse where you would like to secure the Thermo-Hygrometer. (Fig A)



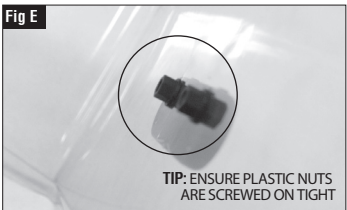
2. Remove any dust and moisture.
3. Secure the sticker (included) in position.
4. With one hand holding the inside of the Mondi Mini Greenhouse, position the drill bit (included) against one of the two circles marked on the sticker.
5. Turn the drill bit by hand, or by drill, to cut out the circle. (Fig B) **Warning:** Keep hands and fingers away from the circle to avoid injury



6. Repeat step 4 and 5 for the second circle.
7. Store the drill bit for future use and keep away from children.
8. Remove the two plastic nuts from the back of the Thermo-Hygrometer. (Fig C) **Warning:** Choking hazard. Keep plastic nuts away from children.



10. Replace the two plastic nuts from the inside of the Mondi Mini Greenhouse. (Fig E)



11. Turn power on and reset minimum and maximum temperature and humidity settings. Congratulations, you are now ready to use your Mondi Mini Greenhouse Thermo-Hygrometer!

Tip: (When not in use, turn power off and store the unit in a cool dry place with the battery removed.)

5. OTHER DISPLAY OPTIONS

Adjust the metal stand/hanger at the back of the device and either set it on a table or hang it anywhere you like. (Fig F & G)

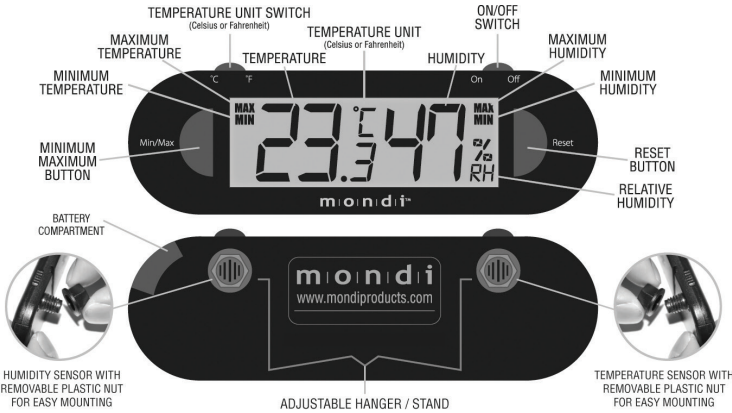


6. BATTERY REPLACEMENT

This device requires a 1.5 volt L1154H alkaline button cell battery (included). Equivalent batteries include A76, LR44, AG13, PX76A and GPA76.

- To replace the battery, turn over the Thermo-Hygrometer and pull out the battery compartment, located on this side of the device, to remove it.
- Remove the battery and replace it with a new one. Make sure to dispose of all batteries by bringing them to the nearest battery recycling center.
- Slide the battery compartment back into the device. You should hear a "click" when it is secure.

7. OPERATION



8. TROUBLESHOOTING

PROBLEM	POSSIBLE CAUSES	SOLUTION
The display is faint or not working.	The battery needs replacing.	Install a new L1154H battery (or equivalent) into the device.
The temperature and humidity readings seem inaccurate.	This device has a variance of +/- one degree and displays an approximate reading.	Clean the temperature and humidity sensors to ensure they are not plugged with dirt or other debris.
The device is on but it's not displaying the temperature or humidity.	The device has just been turned on and is still calibrating the data.	Wait five to ten seconds for the information to be displayed.

9. FREQUENTLY ASKED QUESTIONS

Q: What are the advantages of the Mondi Mini Greenhouse Thermo-Hygrometer?

A: The biggest advantage of the Mondi Mini Greenhouse Thermo-Hygrometer is the ability to get real-time information about the conditions inside your Mini Greenhouse without having to use an internal or external thermometer/hygrometer. These other devices often require you to open the dome to read the information, which is not only a hassle but also disturbs the environment inside the Mini Greenhouse. This benefit, along with its quality design and incredible durability, makes it the number-one product when propagating.

Q: What is temperature and relative humidity and why are they important?

A: Temperature is a measure of how hot or cold the air is, while relative humidity is a term used to describe the amount of water vapour in the environment. Plants do not fare well when exposed to extreme conditions, so to ensure plants reach their full potential temperature and humidity need to be kept at optimal levels.

Q: What is the ideal temperature to maintain inside my Mondi Mini Greenhouse?

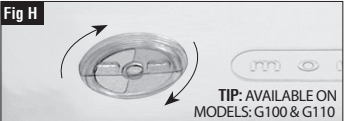
A: The ideal temperature inside your Mini Greenhouse can be anywhere between 18 to 35 °C (64-95 F), depending on the plant you are growing. Do some research beforehand to determine the optimal temperature for your plants.

Q: What is the ideal relative humidity to maintain inside my Mondi Mini Greenhouse?

A: The ideal humidity for germination is about 80%, although up to 90% is alright. Any higher than 90% can be harmful to plants, while a humidity lower than 80% can slow germination, so monitor humidity carefully. When roots begin to show and new growth is seen humidity should be lowered slowly. Once the roots have taken humidity should be at 60%, and by the end of flowering humidity should be at around 40%.

Q: How can I adjust the temperature and humidity in my Mondi Mini Greenhouse?

A: Mondi Mini Greenhouses are available with Easy Vents that can be opened and closed to adjust the conditions inside. Opening the Easy Vents will lower temperature and humidity, while closing them will raise temperature and humidity. (Fig H)



Q: Do I have to use the proprietary drill piece to mount the Mondi Mini Greenhouse Thermo-Hygrometer?

A: No, you can use any drill piece that is 8mm (1/3") in diameter. Mondi Products Inc. has simply included its proprietary drill piece for your convenience.

Q: Are there any other products like the Mondi Mini Greenhouse Thermo-Hygrometer available?

A: No. The Mini Greenhouse Thermo-Hygrometer is a truly unique and patented product that's only available from Mondi Products Inc. It is the only device that provides you with real-time information and a stored history of minimum and maximum temperature and humidity readings of the conditions inside your Mini Greenhouse without requiring you to use internal or external thermometers/hygrometers that weren't specifically designed for the horticultural industry.

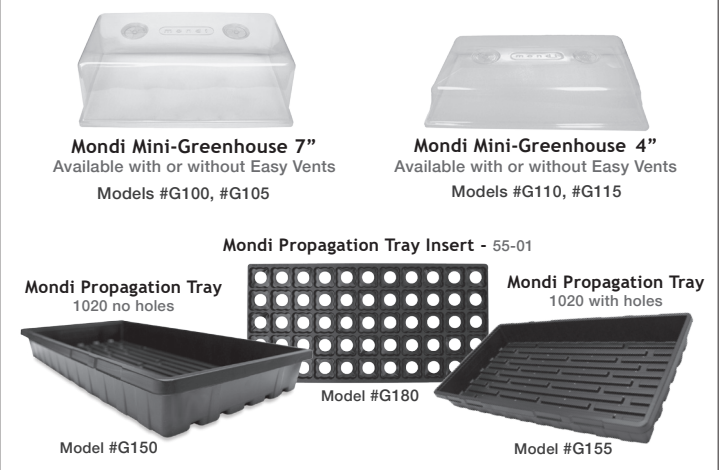
Q: What are some of the other uses for the Mondi Mini Greenhouse Thermo-Hygrometer?

A: The Mondi Mini Greenhouse Thermo-Hygrometer can be used and displayed virtually anywhere. Simply adjust the metal stand/hanger at the back of the device to either set it on a table or hang in an appropriate location to measure temperature and humidity. It can also be used to measure the conditions inside plastic food containers for products such as food platters, sushi platters and baked goods. Simply follow the steps used to mount the device to the Mini-Greenhouse to attach it to the food container and greatly reduce the risk of E. coli, salmonella and other bacteria.

10. SPECIFICATIONS

- Indoor Temperature Measuring Range: -9.9°C to 50°C (15.8°F to 122°F)
- Indoor Humidity Measuring Range: 25% RH to 98% RH
- Power: L1154H (E100E) x 1 piece

EVERYTHING YOU NEED TO CREATE THE MONDI EASY GROW COMBO



For more information please visit www.mondiproducts.com